

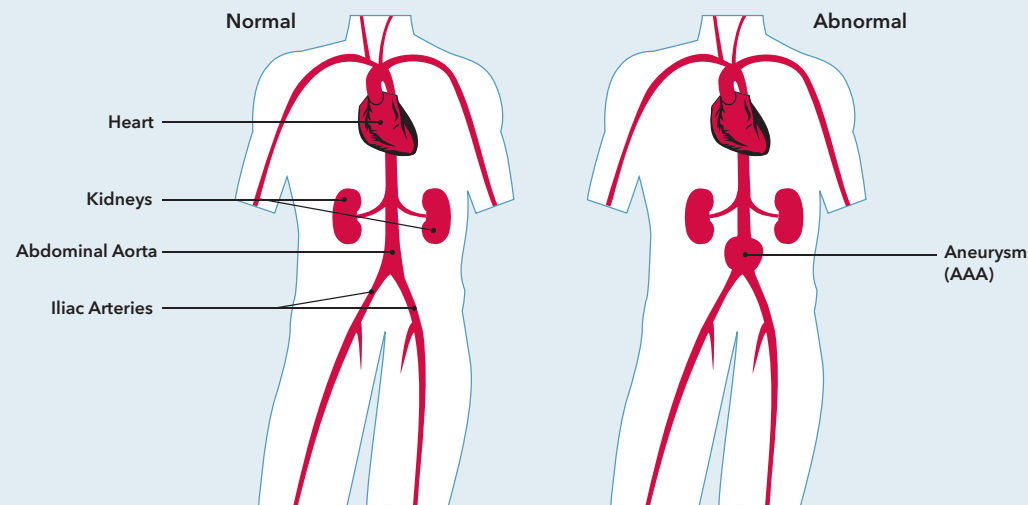
Treating your Abdominal Aortic Aneurysm (AAA)

WHAT IS AN ABDOMINAL AORTIC ANEURYSM?

The aorta is the main blood vessel that carries blood from the heart to the rest of the body. It extends from the chest to the abdomen, where it branches into the iliac arteries. The iliac arteries carry blood to lower parts of the body and to the legs.

Sometimes with aging or other changes, a section of the aorta may weaken and begin to bulge. This bulge can enlarge over time as the walls of the aorta become thinner and stretch (like a balloon). This bulge in the aorta is called an aneurysm.

Sometimes an aneurysm occurs in the part of the aorta that runs through the abdomen. This is called an abdominal aortic aneurysm (AAA).

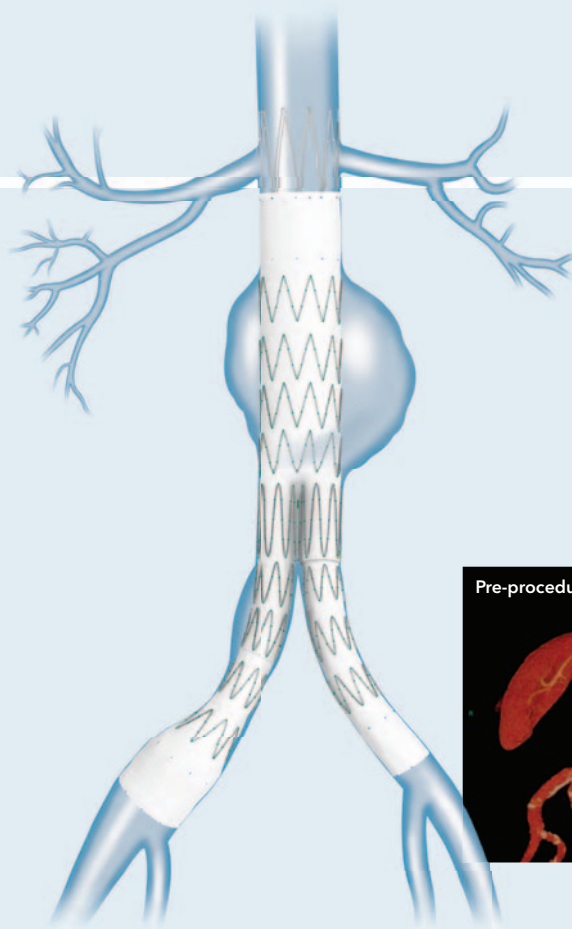


SYMPTOMS OF AN AAA

- Often there are no symptoms.
- The most common symptom is pain. The pain can be in the abdomen, back or chest. It could be anything from a mild pain to a severe pain or tenderness in the mid or upper abdomen or lower back.
- Some patients feel the aneurysm as a pulsating or throbbing mass in their abdomen.

RISK FACTORS OF AN AAA

Risk factors for developing an aneurysm include family history, smoking, heart disease and high blood pressure. If you are at risk for developing an aneurysm, your doctor may recommend periodic checks. The checks could include a physical exam and possibly a CT scan or ultrasound.

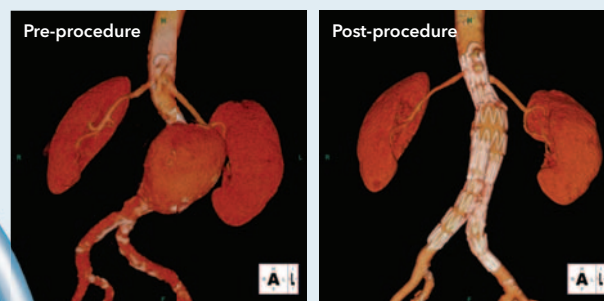


HOW DO DOCTORS TREAT AN AAA?

When an aneurysm is small, your doctor may recommend periodic checkups to monitor it. If an aneurysm is larger, or is rapidly growing, it has more risk of bursting. If your doctor thinks there is a risk the aneurysm may burst, he or she may recommend treatment. There are two types of treatment for AAA:

- Open Surgical Repair
- Endovascular Repair

The goal of all AAA repair is to prevent the aorta from bursting.

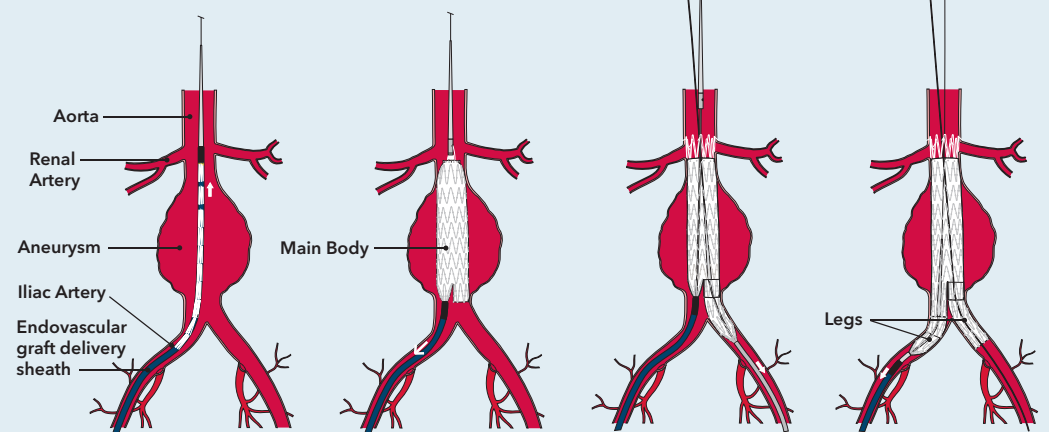


ENDOVASCULAR REPAIR

Before the procedure, your doctor looks at pictures of your aorta (CT scan and angiography). From these pictures, the doctor can choose the proper size for each part of the Zenith Flex AAA Endovascular Graft so that it will fit your blood vessels. During the procedure, the doctor uses X-rays to see the graft and position it correctly.

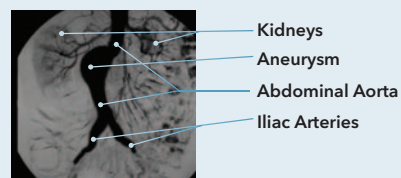
To place the graft, your doctor makes a small cut near each hip (near the crease between the abdomen and thigh) to get to the femoral arteries (blood vessels). Through these small

cuts, each part of the graft is inserted separately into your bloodstream. The main body is positioned in the aorta. The legs extend from the main body into the iliac arteries. When each part of the graft is released from its tube, it opens up to fill and reinforce the blood vessels (aorta, iliac arteries). When both legs are connected to the main body, the graft seals off (excludes) the aneurysm.



WHY IS FOLLOW-UP IMPORTANT?

If you receive a Zenith Flex AAA Endovascular Graft, it is very important that you have regularly scheduled follow-up appointments with your doctor because the long-term results of endovascular repair have not been established. It is possible for problems to occur that do not cause noticeable symptoms. Therefore, your doctor needs to look at pictures (X-ray, CT scan) of your aneurysm and graft on a regular basis. If a problem occurs, your doctor may recommend additional procedures.



Recommended Imaging Schedule for Endograft Patients

- Pre-procedure
- Procedural
- Pre-discharge (within 7 days)
- 1 month
- 3 month
- 6 month
- 12 month (annually thereafter)

WHAT SHOULD I DO WITH MY PATIENT I.D. CARD?

If your AAA is treated with a Zenith Endovascular Graft, you will receive a Zenith Endovascular Graft Patient I.D. Card. The card provides valuable information concerning:

- Type of device implanted
- Date of implant
- Your doctors
- MRI information

Be sure to tell all of your health care providers that you have the graft and show them your Patient I.D. Card. You should keep your Patient I.D. Card available at all times.



Patient Name	Implanting Date
Implanting Facility Name	
Implanting Physician	
Implanting Physician Phone #	
Follow-up Physician	
Follow-up Physician Phone Number	
Product Catalog #	
Product Catalog #	

Before MRI, you must show this card to your doctor who should assess potential risks and consider the MRI information in the device labeling on www.zenithendograft.com. Because of potential risks, the MRI facility should allow for prompt intervention, if necessary.