

TRICLIP[®] ENDOSCOPIC CLIPPING DEVICE



1

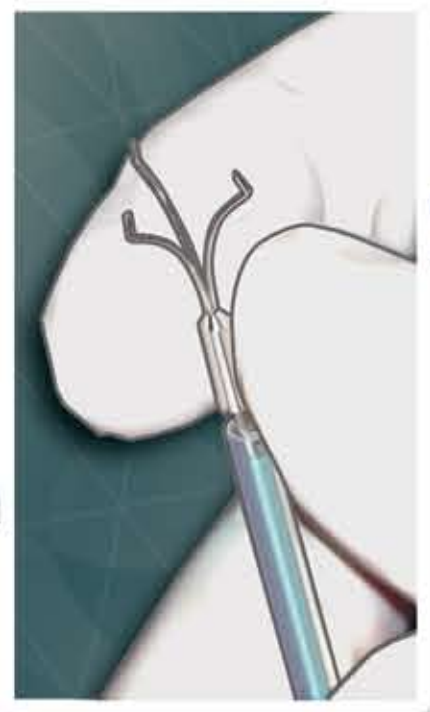
Ensure that the clip is securely attached to the introducer by pulling gently on the clip.
NOTE: Confirm that the spool is in its original position and that the clip prongs are spread apart.

NOTE: If clip becomes detached, align the notch at the distal end of the cable with the corresponding notch at the base of a clip and slide metal sleeve to cover intersecting notches.



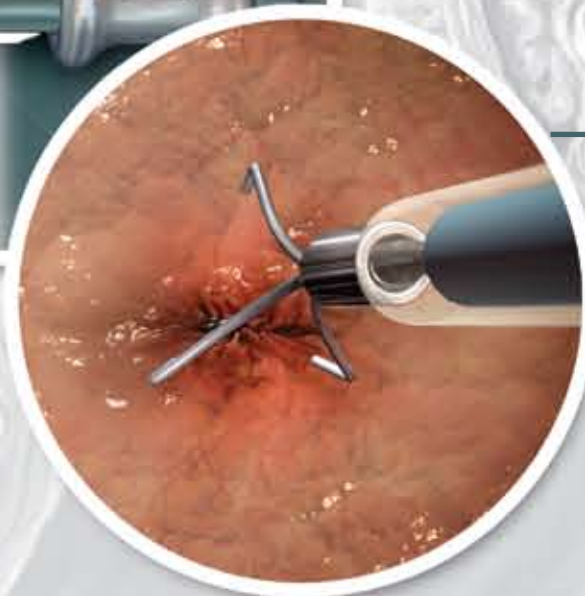
2

Unscrew luer lock and slowly advance the sheath extender forward until the clip is completely retracted within the outer sheath. **NOTE:** To facilitate smooth retraction, guide the clip into the outer sheath while advancing the sheath extender. Remove flared tip if applicable.



3

Advance the device into the endoscope accessory channel until it exits the distal end of the endoscope. To expose the clip, pull the sheath extender toward the handle. Using the luer lock, reconnect the sheath extender to the handle.



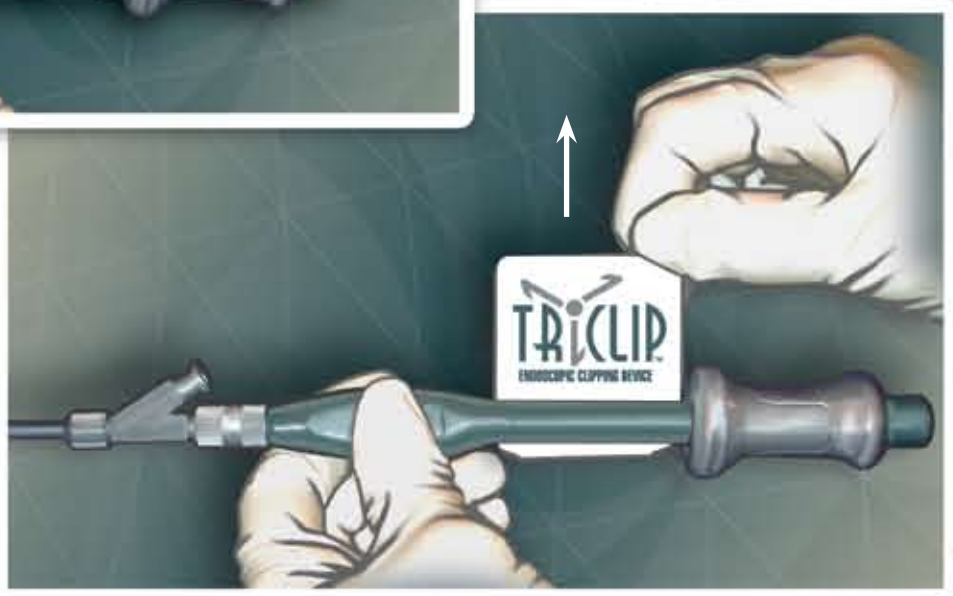
4

Flush if applicable.



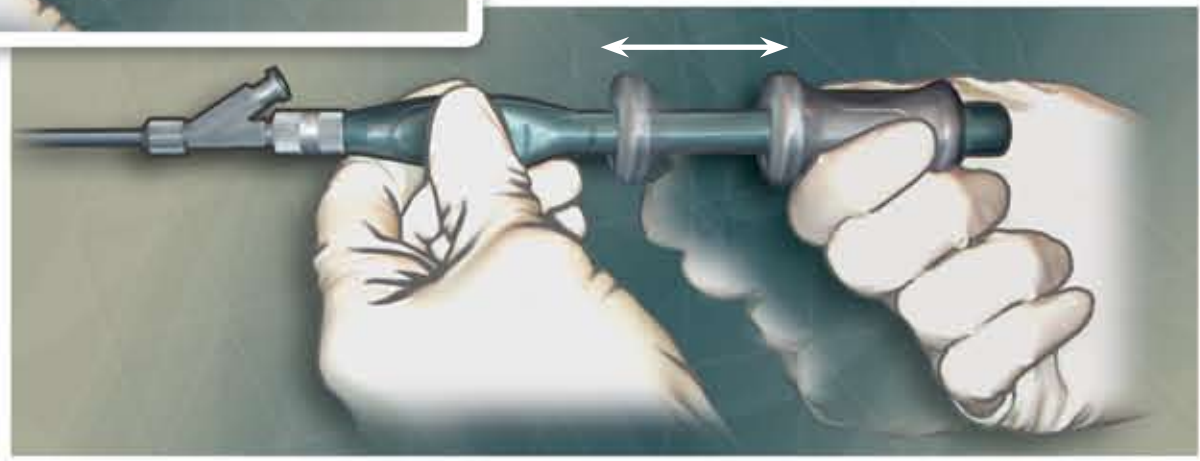
5

When targeted position is reached, remove the clip release tab.



6

Grasp the stem grip with one hand and the clip spool with the other hand. Advance the clip spool toward the stem grip until the prongs compress on the tissue as desired.



7

On the targeted site, release the clip from the device by slowly pulling the clip spool toward the backstop.

