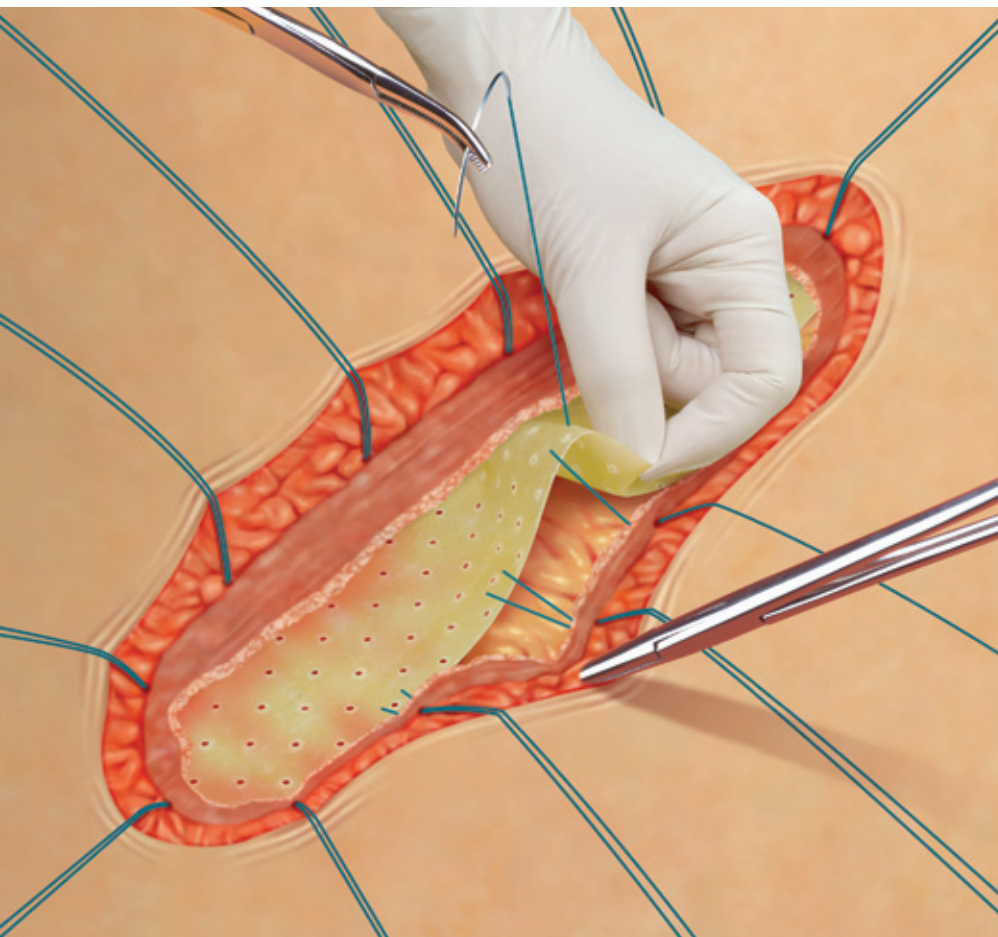




Biodesign™

SURGISIS® ABDOMINAL LOCK GRAFT



Support the healing process.

The Biodesign Abdominal Lock Graft is your all-natural key to closing abdominal incisions. Biodesign does more than just hold damaged tissue in place—it actually helps the body restore itself.

Biodesign's durable material is strong enough to support the largest abdominal incisions. By acting as a scaffold that signals the incision to restore itself, it lends strength to the weakened area while supporting the healing process.

Once the area is fully restored, Biodesign adds more support by integrating into the surrounding area. And because its protein-rich structure is completely natural, it does not create the hard or numb scar tissue that synthetic mesh can leave behind.

Cook Medical—Offering surgeons advanced tissue repair solutions.

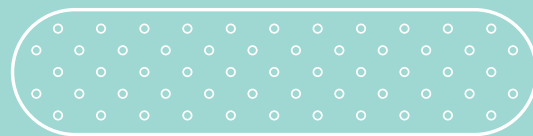
Global
Product
Number

Order
Number

Size
cm

Abdominal Lock

G36099	C-ABL-6X30	6 x 30
G36100	C-ABL-8X30	8 x 30



FEATURES & BENEFITS

- 8-ply strength for maximum support.
- Restores strength to the weakened area.
- 18 month shelf life.
- No refrigeration necessary.
- Acellular.

DATA

1. Badylak S, Kokini K, Tullius B, et al. Strength over time of a resorbable bioscaffold for body wall repair in a dog model. *J Surg Res.* 2001;99(2):282-287.
2. Badylak SF, Kokini K, Tullius B, et al. Morphologic study of small intestinal submucosa as a body wall repair device. *J Surg Res.* 2002;103(2):190-202.
3. Badylak SF, Park K, Peppas N, et al. Marrow-derived cells populate scaffolds composed of xenogeneic extracellular matrix. *Exp Hematol.* 2001;29(11):1310-1318.
4. Badylak SF. Small intestinal submucosa (SIS): a biomaterial conducive to smart tissue remodeling. In: Bell E, ed. *Tissue Engineering: Current Perspectives.* Cambridge, MA: Burkhauser Publishers; 1993:179-189.
5. Edelman DS. Laparoscopic herniorrhaphy with porcine small intestinal submucosa: a preliminary study. *JSLs.* 2002;6(3):203-205.

TIPS

- **Slow-resorbing sutures** are recommended in conjunction with **interrupted suture technique**.
- Place the Biodesign graft in a **retrofacial underlay position**.
- For best results, underlay **Biodesign 3 to 4 cm beyond fascial edge**.
- While the through-and-through fascial stitches are in place but not yet secure, **close the fascia over the patch** using a running, looped resorbing suture.

PROCEDURAL AREAS

HERNIA REPAIR

FISTULA REPAIR
PLASTIC & RECONSTRUCTIVE/ENT
STAPLE LINE REINFORCEMENT
PEYRONIE'S REPAIR
CONTINENCE RESTORATION
DURAL REPAIR
PELVIC FLOOR REPAIR

ABDOMINAL LOCK
ABDOMINAL LOCK GRAFT
VENTRAL HERNIA
VENTRAL/INCISIONAL HERNIA
INGUINAL HERNIA
HIATAL HERNIA
PARASTOMAL HERNIA

EVOLUTION OF TISSUE REPAIR



Biodesign is a breakthrough technology that provides signals and support for the body to restore itself. It incorporates the best attributes of a biologic graft—complete remodeling and resistance to infection—yet it is easy to use, widely available and moderately priced.



www.cookmedical.com

COOK MEDICAL INCORPORATED

P.O. Box 4195, Bloomington, IN 47402-4195 U.S.A.
Phone: 812.339.2235, Toll Free: 800.457.4500, Toll Free Fax: 800.554.8335

COOK (CANADA) INC.

111 Sandiford Drive, Stouffville, Ontario, L4A 7X5 CANADA
Phone: 905.640.7110, Toll Free: 800.668.0300

WILLIAM A. COOK AUSTRALIA PTY. LTD.

95 Brandl Street, Brisbane Technology Park, Eight Mile Plains
Brisbane, QLD 4113 AUSTRALIA, Phone: +61 7 3841 1188

COOK IRELAND LTD.

O'Halloran Road, National Technology Park, Limerick, IRELAND
Phone: 353 613 34440

© COOK 2009 SUR-BM-ABL-EN-200905

AORTIC
INTERVENTION

CARDIOLOGY

CRITICAL
CARE

ENDOSCOPY

INTERVENTIONAL
RADIOLOGY

PERIPHERAL
INTERVENTION

SURGERY

UROLOGY

WOMEN'S
HEALTH