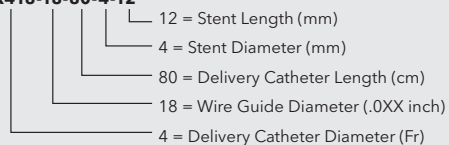


Order Number	Reference Part Number	Accepts Wire Guide Diameter inch	Stent Diameter mm	Stent Length mm	Minimum Guiding Catheter/Sheath ID inch	Guiding Catheter/Sheath Fr
Formula 418 – 80 cm Over-the-Wire Delivery System						
G56605	FOR418-18-80-4-12	.018	4	12	.068	6.0/5.0
G56606	FOR418-18-80-4-16	.018	4	16	.068	6.0/5.0
G56607	FOR418-18-80-4-20	.018	4	20	.068	6.0/5.0
G56631	FOR418-18-80-5-12	.018	5	12	.068	6.0/5.0
G56609	FOR418-18-80-5-16	.018	5	16	.068	6.0/5.0
G56610	FOR418-18-80-5-20	.018	5	20	.068	6.0/5.0
G56611	FOR418-18-80-6-12	.018	6	12	.068	6.0/5.0
G56613	FOR418-18-80-6-16	.018	6	16	.068	6.0/5.0
G56614	FOR418-18-80-6-20	.018	6	20	.068	6.0/5.0
G56615	FOR418-18-80-7-12	.018	7	12	.078	7.0/6.0
G56616	FOR418-18-80-7-16	.018	7	16	.078	7.0/6.0
G56617	FOR418-18-80-7-20	.018	7	20	.078	7.0/6.0
Formula 418 – 135 cm Over-the-Wire Delivery System						
G56618	FOR418-18-135-4-12	.018	4	12	.068	6.0/5.0
G56619	FOR418-18-135-4-16	.018	4	16	.068	6.0/5.0
G56620	FOR418-18-135-4-20	.018	4	20	.068	6.0/5.0
G56621	FOR418-18-135-5-12	.018	5	12	.068	6.0/5.0
G56623	FOR418-18-135-5-16	.018	5	16	.068	6.0/5.0
G56624	FOR418-18-135-5-20	.018	5	20	.068	6.0/5.0
G56625	FOR418-18-135-6-12	.018	6	12	.068	6.0/5.0
G56626	FOR418-18-135-6-16	.018	6	16	.068	6.0/5.0
G56627	FOR418-18-135-6-20	.018	6	20	.068	6.0/5.0
G56628	FOR418-18-135-7-12	.018	7	12	.078	7.0/6.0
G56629	FOR418-18-135-7-16	.018	7	16	.078	7.0/6.0
G56630	FOR418-18-135-7-20	.018	7	20	.078	7.0/6.0

Some products or part numbers may not be available in all markets. Contact your local Cook representative or Customer Service for details.

Reference Part Number Key

FOR418-18-80-4-12



Secure renal access and treat with precision.

With these compatible devices, you can gain and maintain renal artery access and perform entire renal procedures:

Introducers



- **Micropuncture® Stiffened Cannula Introducer Sets**

Wire Guides



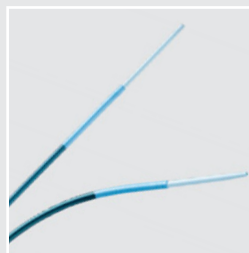
- **Roadrunner® Extra-Support Mandril Wire Guide**
- **Approach® Pro LT Wire Guide**
- **Standard Safe-T-J® Fixed Core Wire Guide**
- **McNamara Renal Exchange Wire Guide**
- **Shorty® Interventional Wire Guide**

Balloons



- **Advance® 14LP Low Profile PTA Balloon Dilatation Catheter**
- **Advance 18LP Low Profile PTA Balloon Dilatation Catheter**

Sheaths and Catheters



- **High-Flex Ansel Guiding Sheath**
- **Flexor® Ansel Guiding Sheath**
- **Flexor® Raabe Guiding Sheath**
- **Royal Flush® Plus Beacon® Tip High-Flow Catheter**
- **Torcon NB® Advantage Beacon Tip Angiographic Catheter**

Customer Service

EMEA: EDI - www.cookmedical.com/edi.do
Distributors: +353 61239240, ssc.distributors@cookmedical.com
Austria: +43 179567121, oe.orders@cookmedical.com
Belgium: +32 27001633, be.orders@cookmedical.com
Denmark: +45 38487607, da.orders@cookmedical.com
Finland: +358 972519996, fi.orders@cookmedical.com
France: +33 171230269, fr.orders@cookmedical.com
Germany: +49 6950072804, de.orders@cookmedical.com
Hungary: +36 17779199, hu.orders@cookmedical.com
Ireland: +353 61239252, ie.orders@cookmedical.com
Italy: +39 0269682853, it.orders@cookmedical.com
Netherlands: +31 202013367, nl.orders@cookmedical.com
Norway: +47 23162968, no.orders@cookmedical.com
Spain: +34 912702691, es.orders@cookmedical.com
Sweden: +46 858769468, se.orders@cookmedical.com
Switzerland - French: +41 448009609, fr.orders@cookmedical.com
Switzerland - Italian: +41 448009609, it.orders@cookmedical.com
Switzerland - German: +41 448009609, de.orders@cookmedical.com
United Kingdom: +44 2073654183, uk.orders@cookmedical.com

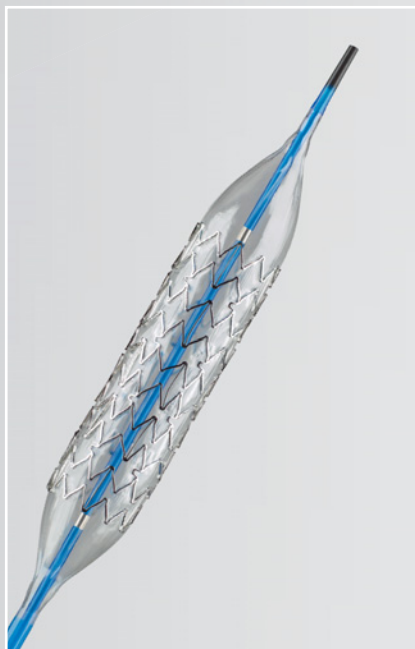
www.cookmedical.com

Americas: EDI - www.cookmedical.com/edi.do
Phone: +1 812.339.2235, 800.457.4500, Fax: 800.554.8335
E-mail: orders@cookmedical.com

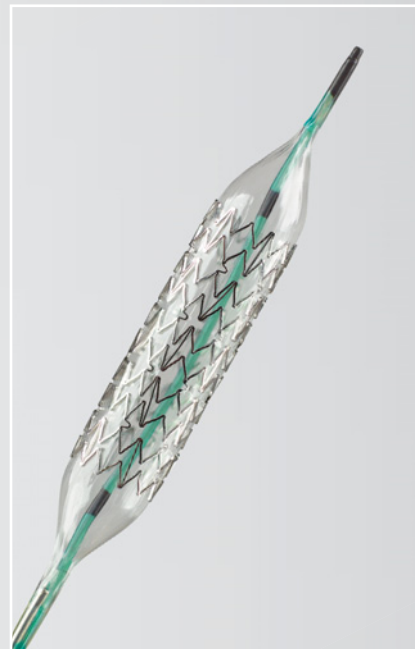
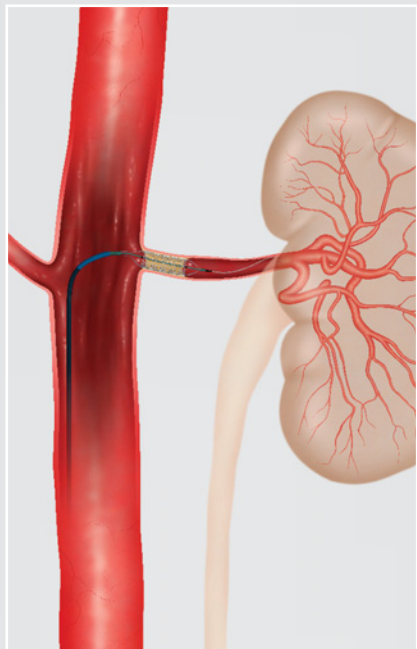
Australia:
Phone: +61 738411188, 1800777222, Fax: +61 738411288, 1800077283
E-mail: cau.custserv@cookmedical.com



Increase your procedural accuracy with balloon-expandable stent technology engineered for precision.



Formula 418®



Formula™ 414 RX

Formula™
RENAL BALLOON-EXPANDABLE STENT



www.cookmedical.com

When precise deployment matters, so does technology.

To precisely place most balloon-expandable stents, you have to be able to predict how much they will shorten. But precision shouldn't involve guesswork. That's why Formula stents are engineered for precision: precise placement, precise treatment and precise conformability.

Precise Placement

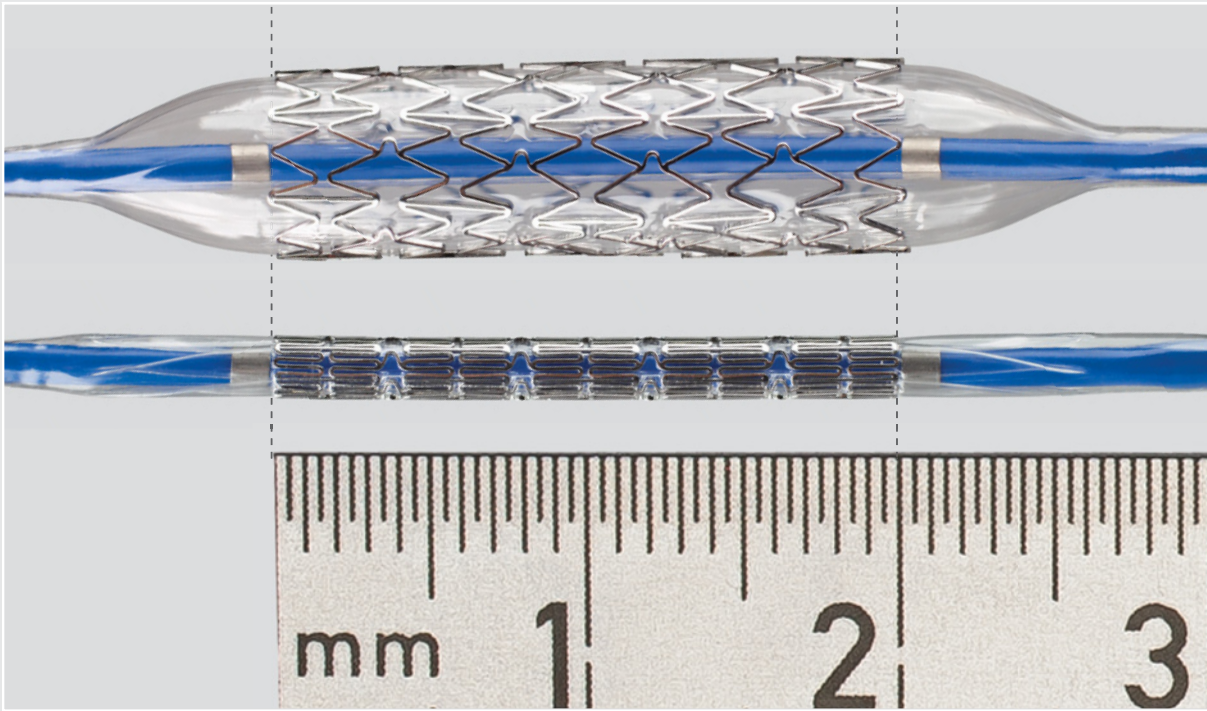
Formula stents don't shorten, and their ends align with the balloon markers. These features help you place the stent and cover the lesion reliably and precisely.

Precise Conformability

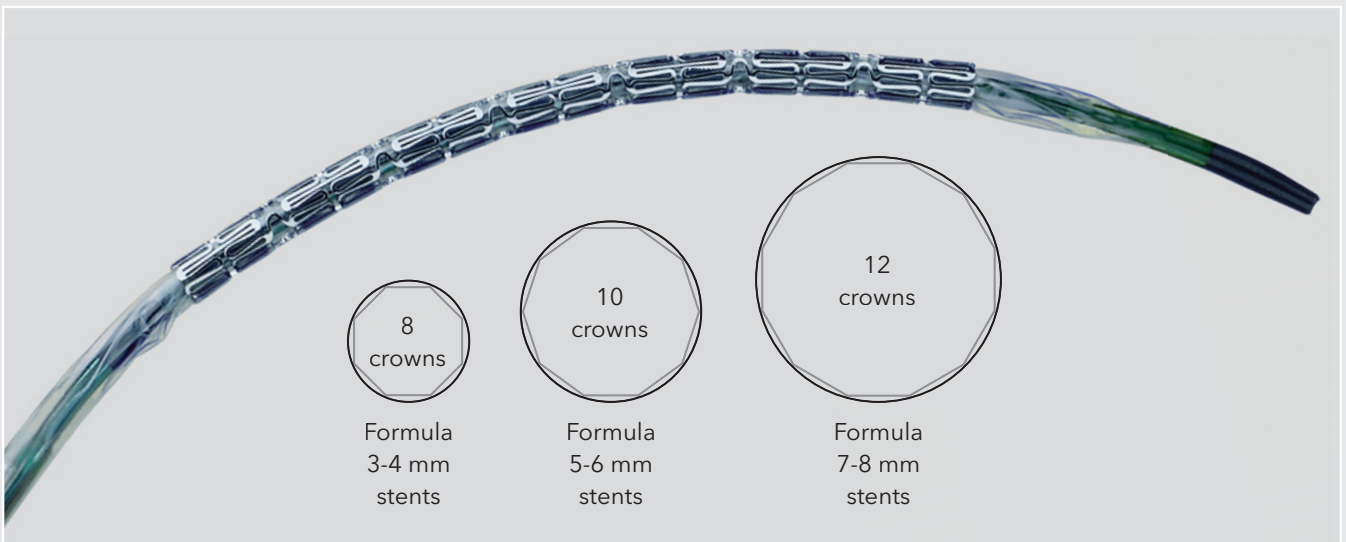
Formula balloon-expandable stents have additional crowns that give their stents a more circular shape and improve their scaffolding.

Precise Treatment

Balloon lengths are customized to reduce the amount of healthy tissue that is dilated during treatment.



Precise Placement



Precise Conformability

Order Number	Reference Part Number	Accepts Wire Guide Diameter inch	Stent Diameter mm	Stent Length mm	Minimum Guiding Catheter/Sheath ID inch	Guiding Catheter/Sheath Fr
Formula 414RX – 80 cm Rapid Exchange Delivery System						
G18523	FORX414-14-80-4-12	.014	4	12	.068	6.0/5.0
G18524	FORX414-14-80-4-16	.014	4	16	.068	6.0/5.0
G18525	FORX414-14-80-4-20	.014	4	20	.068	6.0/5.0
G56958	FORX414-14-80-5-12	.014	5	12	.068	6.0/5.0
G56959	FORX414-14-80-5-16	.014	5	16	.068	6.0/5.0
G56960	FORX414-14-80-5-20	.014	5	20	.068	6.0/5.0
G56962	FORX414-14-80-6-12	.014	6	12	.068	6.0/5.0
G56961	FORX414-14-80-6-16	.014	6	16	.068	6.0/5.0
G56963	FORX414-14-80-6-20	.014	6	20	.068	6.0/5.0
G56964	FORX414-14-80-7-12	.014	7	12	.068	6.0/5.0
G56965	FORX414-14-80-7-16	.014	7	16	.068	6.0/5.0
G56967	FORX414-14-80-7-20	.014	7	20	.068	6.0/5.0
Formula 414RX – 135 cm Rapid Exchange Delivery System						
G18526	FORX414-14-135-4-12	.014	4	12	.068	6.0/5.0
G18527	FORX414-14-135-4-16	.014	4	16	.068	6.0/5.0
G18528	FORX414-14-135-4-20	.014	4	20	.068	6.0/5.0
G56966	FORX414-14-135-5-12	.014	5	12	.068	6.0/5.0
G56968	FORX414-14-135-5-16	.014	5	16	.068	6.0/5.0
G56969	FORX414-14-135-5-20	.014	5	20	.068	6.0/5.0
G56970	FORX414-14-135-6-12	.014	6	12	.068	6.0/5.0
G56971	FORX414-14-135-6-16	.014	6	16	.068	6.0/5.0
G56972	FORX414-14-135-6-20	.014	6	20	.068	6.0/5.0
G56973	FORX414-14-135-7-12	.014	7	12	.068	6.0/5.0
G56974	FORX414-14-135-7-16	.014	7	16	.068	6.0/5.0
G56975	FORX414-14-135-7-20	.014	7	20	.068	6.0/5.0

Some products or part numbers may not be available in all markets. Contact your local Cook representative or Customer Service for details.



Reference Part Number Key

FORX414-14-80-5-20

- L 20 = Stent Length (mm)
- 5 = Stent Diameter (mm)
- 80 = Delivery Catheter Length (cm)
- 14 = Wire Guide Diameter (.0XX inch)
- 4 = Delivery Catheter Diameter (Fr)
- X = Rapid Exchange Delivery System