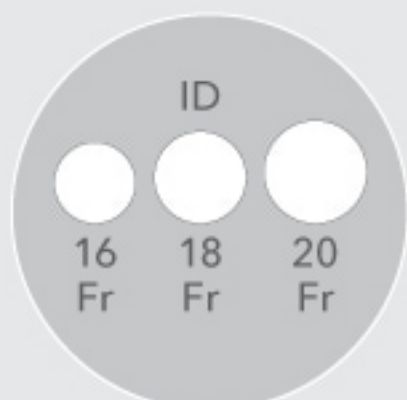


# Durable by design: Zenith Alpha™ Thoracic

## Treat more patients with TEVAR

Zenith Alpha Thoracic was designed to address vascular access issues associated with larger profile devices.



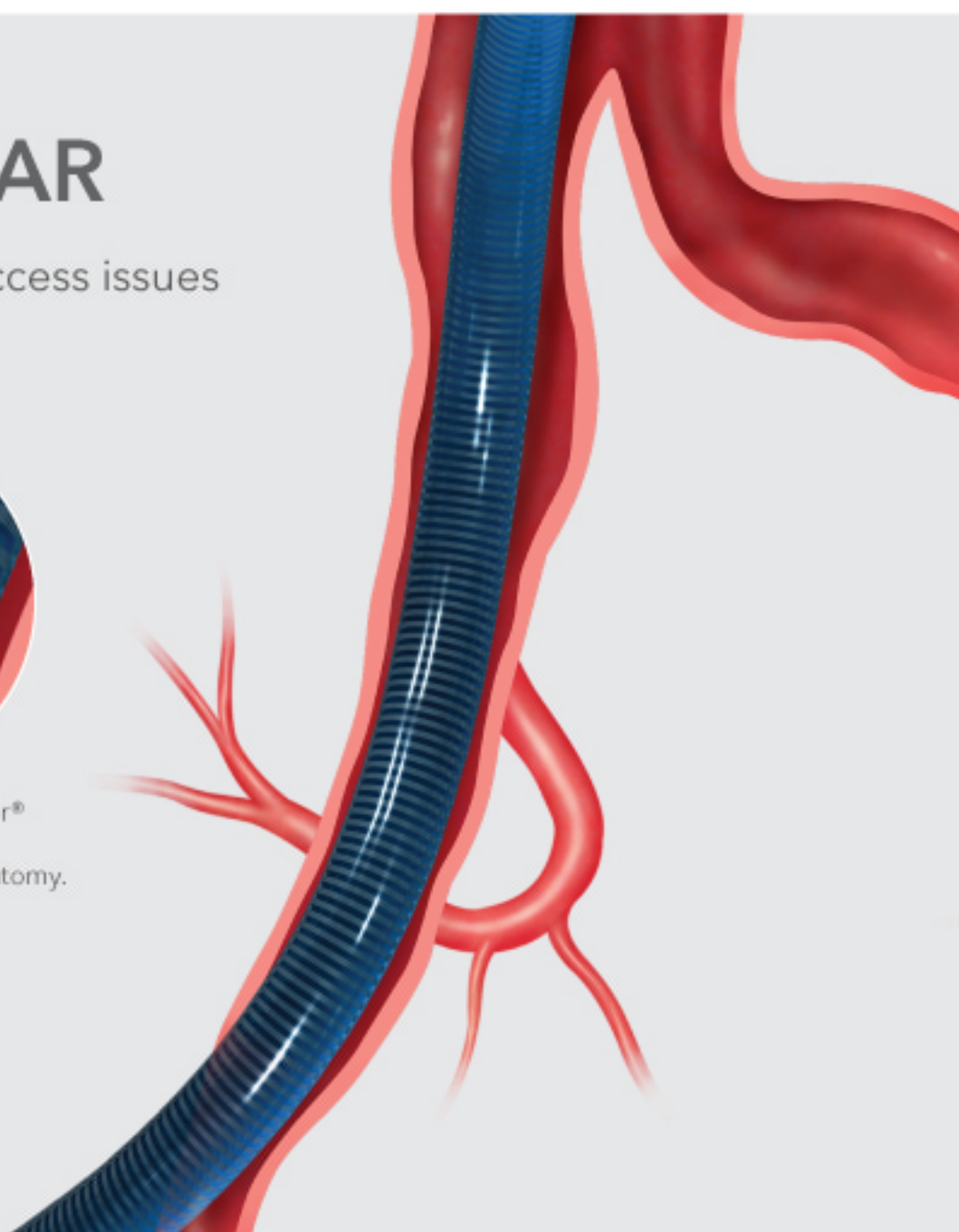
The lowest profile thoracic device on the market helps improve vessel access.



The hydrophilic-coated Flexor® Introducer Sheath helps the device track through iliac anatomy.

A broad range of lengths and diameters help fit the graft to the patient anatomy.

**18mm to 46mm**



## Intuitive introduction system

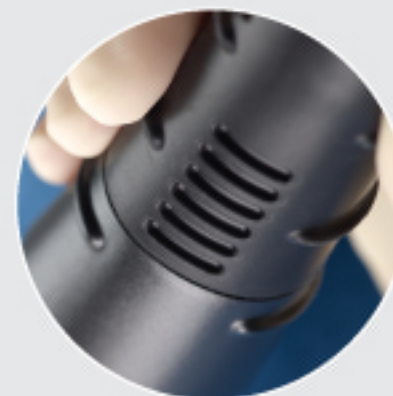
The device features a new ergonomic handle that simplifies deployment without compromising precision and control.



The blue rotation handle makes deployment simpler with no trigger wires to remove.



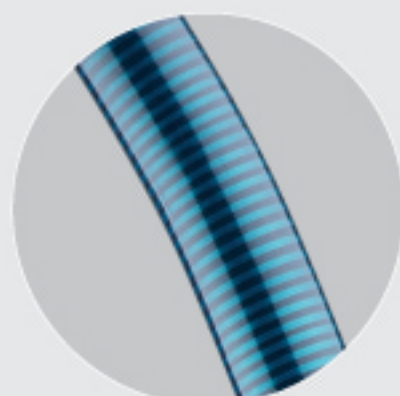
The black safety-lock knob prevents unintended movement by locking the rotation handle in place.



The black sliding gripper helps ensure controlled release of the graft as the sheath is pulled back.

## Designed for durability

From the proximal to the distal seal, the Zenith Alpha Thoracic device is engineered to help you deliver a durable repair.



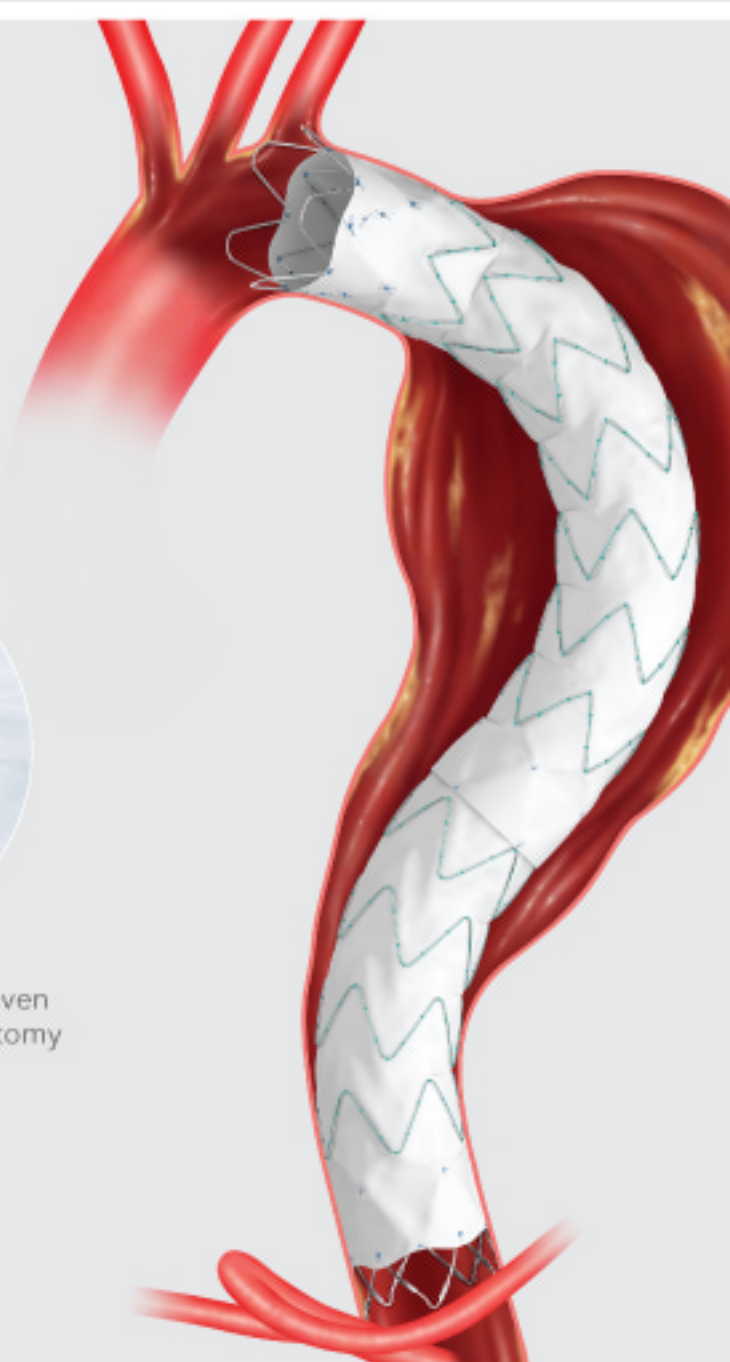
A precurved cannula helps improve conformability in the arch.



Active fixation helps secure the device in a healthy seal zone.



Nitinol z-stents and tightly woven fabric conform to patient anatomy to help prevent endoleaks.



cookmedical.com